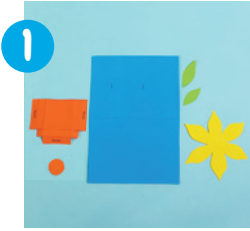




Greeting Cards



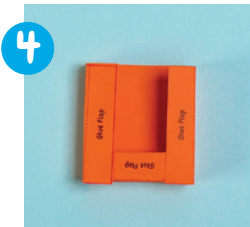
1 **Print out** the template of the card and flower shapes onto cardstock or paper and cut them out.



2 **Fold** the card printout in half with the markings for slits on the inside left of the card. **Colour and glue** the printed flower shapes onto the front of the card to create your flower and stem.



3 **Cut along** the allocated markings on the inside of the card to create 2 slits then thread the elastic band through both slits to create two small loops. Place your **Kinder Chocolate** in these loops.



4 **Fold** the printed flowerpot shape into a box at the designated locations on the template. Fold in the bottom tab to form the bottom of the pot.



5 **Apply glue** to the marked side areas to secure the flowerpot shape and then glue the finished flowerpot over half of the Kinder Chocolate.



You Need:

Kinder Chocolate

Cardstock OR Paper (coloured)

Rubber bands

Glue

Scissors





Greeting Cards

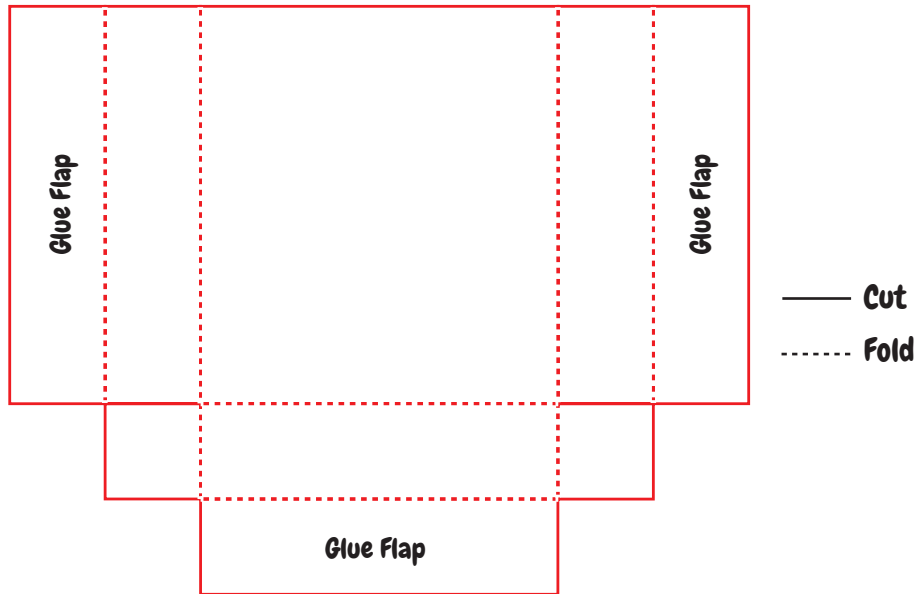
Greeting Card (rotated)

A large rectangular area defined by a solid blue border. A horizontal dashed blue line divides the rectangle into two sections. The top section is larger than the bottom section. In the bottom section, there are two short vertical black lines, one on the left and one on the right, positioned roughly in the middle of the width.



Greeting Cards

Flowerpot



Flower

